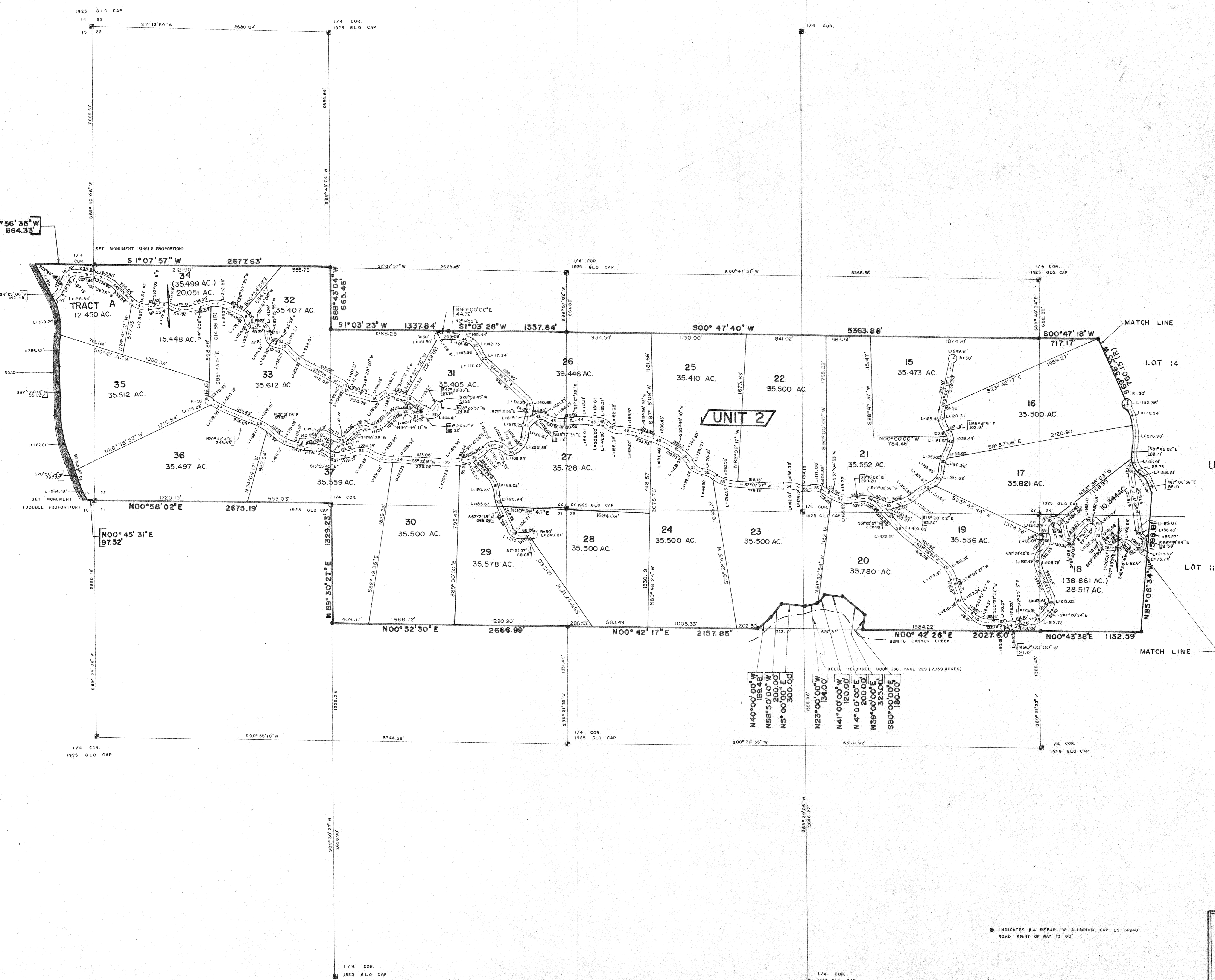


UNIT 3

UNIT 2

UNIT 1

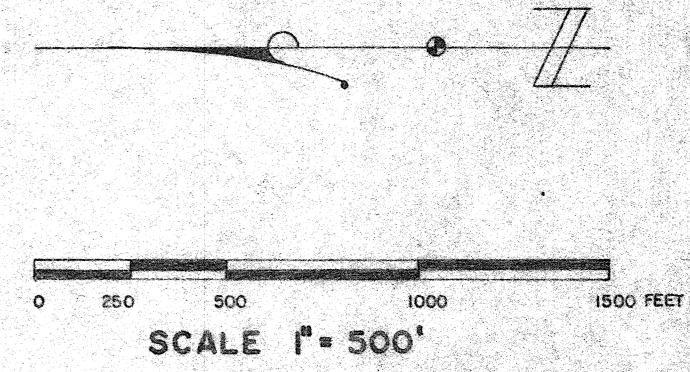


DEED RECORDED BOOK 630, PAGE 229 (7.339 ACRES)

N40°00'00"W 134.00'
 N56°50'00"W 200.00'
 N5°00'00"E 300.00'

N23°00'00"W 134.00'
 N41°00'00"W 120.00'
 N4°00'00"E 200.00'
 N39°00'00"E 325.00'
 S80°00'00"E 180.00'

SUMMARY OF AREAS	
AREA OF ROADS	36.902 AC.
AREA OF LOTS	837.120 AC.
TOTAL AREA	874.022 AC.



SHEET OF
 PREPARED BY
SUMMIT ENGINEERING CO.
 1317 STATE AVENUE
 ALAMOSA, COLORADO 81101
 Phone: 589-6147

● INDICATES #4 REBAR W. ALUMINUM CAP LS 14840
 ROAD RIGHT OF WAY IS 60'

DATE: JUNE, 88 DRAWN: MC CALC: MD JOB NO.: 1754